

# TRAILER T-677 EU

TECHNICAL SPECIFICATIONS | EQUIPMENT



 **HOMOLOGATION  
EUROPEAN**



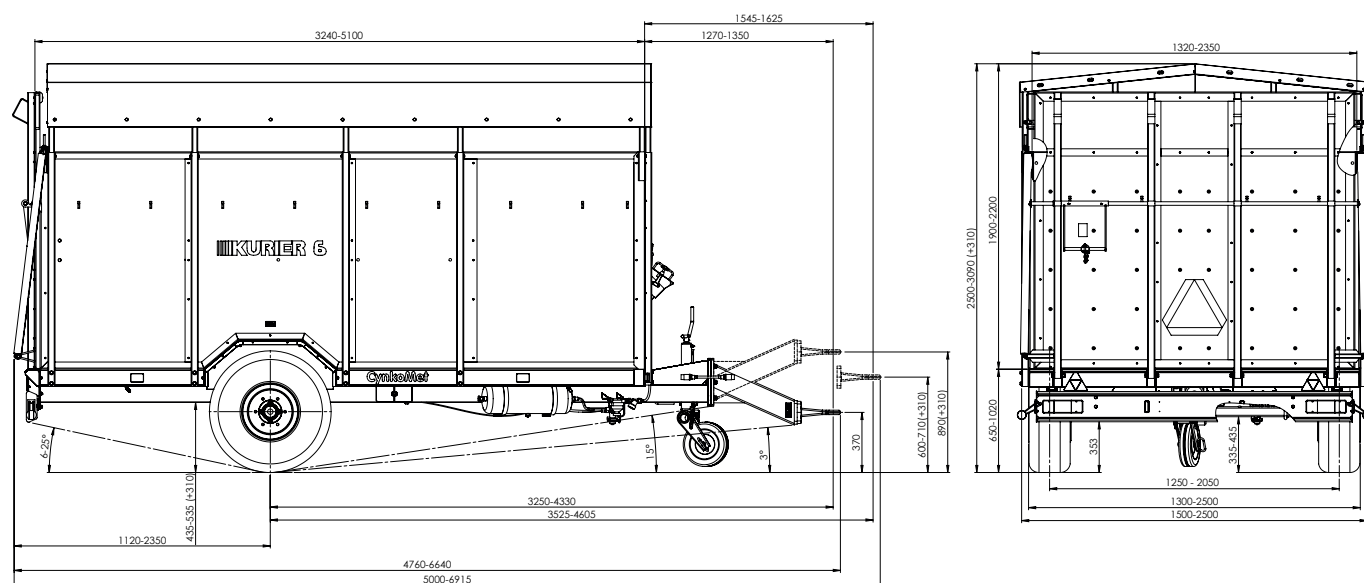
Year of model 2022

version.1.2022

**CynkoMet**<sup>®</sup>  
Czarna Białostocka

<b>TECHNICAL SPECIFICATIONS</b>	
Type/Variant/Version	T-3 / 410 / 112
Load capacity	~3,430 kg*
Unladen mass	~1,760 kg*
Gross vehicle weight rating	5,860 kg
including on axles max.	4,860 kg
including on drawbar max.	1,000 kg
Length	5,739 mm
Width	2,42w0 mm
Height	~2,800 mm
Cargo box dimensions (length x width x height)	4,160 x 2,230 x 1,500 mm
Loading surface	9.3 m <sup>2</sup>
Height of floor above ground	~710 mm
Floor thickness	30mm wood floor
Tire size	11.5/80-15.3
Track of wheels	2,000 mm
Drawbar coupling height - bottom position	410 mm
Drawbar coupling height - top position	830 mm
Max. tolerable vertical load on drawbar	1,000 kg
Max. tolerable load on driving axle	4,200 kg
Transport/working speed	30 km/h (40 km/h version with overrun brake)
Suspension	rigid axle
Class of cooperating tractor	60 HP

\* - unladen weight and loading capacity may differ depending on the trailer's equipment



### STANDARD MACHINE EQUIPMENT

New 11.5/80-15.3 wheels

Walls - water-resistant plywood with film coating on both sides

Axles from the renowned ADR company, homologated (EU 2015/68), bar cross-section - square 70, brake size 300x60 306E, 6 M18x1.5 pins

Impregnated wood floor

Hot-dip galvanized bottom frame (protection of the structure on the exterior and interior of profiles), stringers of the frame made of C120 channel section

Rigid drawbar for coupling with the top or bottom hitch of the tractor, with replaceable 50mm eye, drawbar homologated according to Directive EU 2015/208, 40mm eye

Two wheel chocks placed in galvanized pockets

12V lighting, homologated, rear bulb lamps, LED perimeter lighting

Lighting installation connector cable with 7PIN 12V plug

Homologated, double-circuit, pneumatic brake system with manual braking force adjustment from HALDEX

Parking handbrake with crank

Springs to facilitate the opening of the rear wall

Unfolding side barriers, hot-dip galvanized

Hot-dip galvanized frame for tarpaulin

Straight drawbar support with collapsible steel wheel, partially hot-galvanized

*All of our agricultural machines are designed and tested by our design team using the latest available tools.  
Manufacturing is performed with the greatest diligence and in adherence to rigorous quality standards.*

<b>OPTIONAL MACHINE EQUIPMENT</b>
<b>Structural elements</b>
Interior partition
4 mm aluminum floor
Side door
Watertight anti-slip plastic tub (polyurea)
Coating of rear ramp with anti-skid polyurea
Hot-galvanized sheet walls
<b>Installations</b>
Full LED lighting
Overrun brake (homologation up to 40 km/h)
<b>Driving system</b>
Surcharge for 400/60 - 15.5 wheels
400/60-15.5 spare wheel
11.5/80-15.3 spare wheel
<b>Other equipment</b>
Laced tarpaulin
Drain with ball valve
Warning triangle
Drawbar eye 50mm



The data and photographs given in the catalog are for illustrative purposes only. This document and the information it contains, including prices, do not constitute a commercial offer within the meaning of art. 66 of the Civil Code. This information may be subject to change as products are continuously improved. The manufacturer reserves the right to change a product's characteristics at any time. Products' specifications may change without notice.



**HOT-  
GALVANIZED CONSTRUCTION**